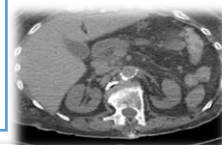




GP Direct to CT (Abdo/ Pelvis)

Use Suspected Cancer *CT FORM*



New NICE Guidelines (NG12; June 2015)

Consider urgent direct access CT scan for people **≥ 60 with weight loss AND any one of**

- Diarrhoea
- Back pain
- Abdominal Pain
- Nausea/ vomiting
- Constipation
- New onset diabetes

In addition to NICE above: Aintree, Royal Liverpool & Whiston will accept suspected cancer CT PILOT referrals from GPs for patients who present with symptoms that cause the GP to have a high index of suspicion of malignancy, but those symptoms do not fit any tumour specific 2ww pathway (see below)

Patient presents with symptoms that cause GP to have high index of suspicion of malignancy:

- ≥ 5% unintentional loss of body weight within 3 months
- Recurrent or progressive abdominal/pelvic pain or bone pain of unexplained aetiology > 4 weeks
- Severe constitutional symptoms e.g. fatigue, sweats of unexplained aetiology > 4 weeks
- Palpable abdominal/ pelvic masses

It is expected GP will have examined the patient and arranged and reviewed:

- Chest X Ray
- Urine
- Bloods – FBC, ESR, Thyroid, Renal, Liver, CRP
- Bone profile, Myeloma screen
- Tumour markers where appropriate (e.g. Ca 125, PSA)

If symptoms, signs or test results fit with a 2WW pathway – use the 2WW pathway.
Otherwise GP to consider referral for Abdo/pelvis CT (radiologist may add chest CT if appropriate)

Contraindications to CT (can discuss any with radiology)

- Renal failure: eGFR ≤45 - ring radiology helpline
eGFR 45 - 60 (radiology will contact patient re: oral hydration)
- Allergy to IV iodinated contrast
- Risk of contrast enhanced nephropathy (e.g. severe dehydration)
- Morbid Obesity (>220kg)
- Aged <18 years
- Possibility of pregnancy
- CT abdo/pelvis in last 12 months

Aintree UH

FAX: 529 3813

Helpline - 07966 993690
12md – 3pm, Mon – Fri
(excludes Bank hols)

Royal Liverpool UH

Fax: 706 5633

Helpline - 706 5450
11 am – 3pm, Mon – Fri
(excludes Bank hols)

Whiston – Use ICE

If unavailable Fax 430 1843
Tel 430 1466
Mon – Fri (office hours)